

**Legend**

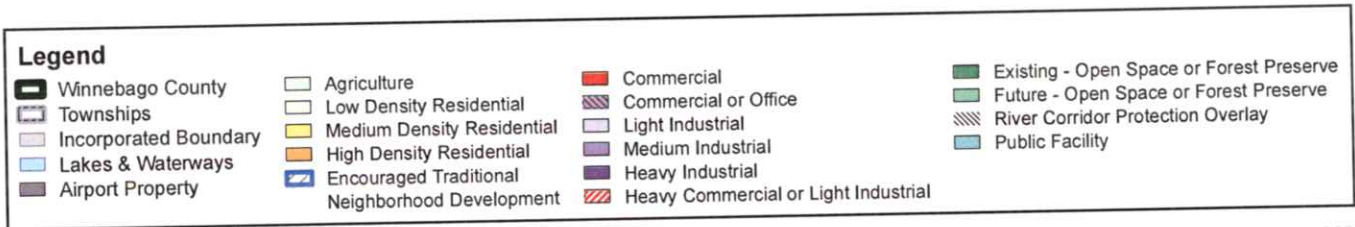
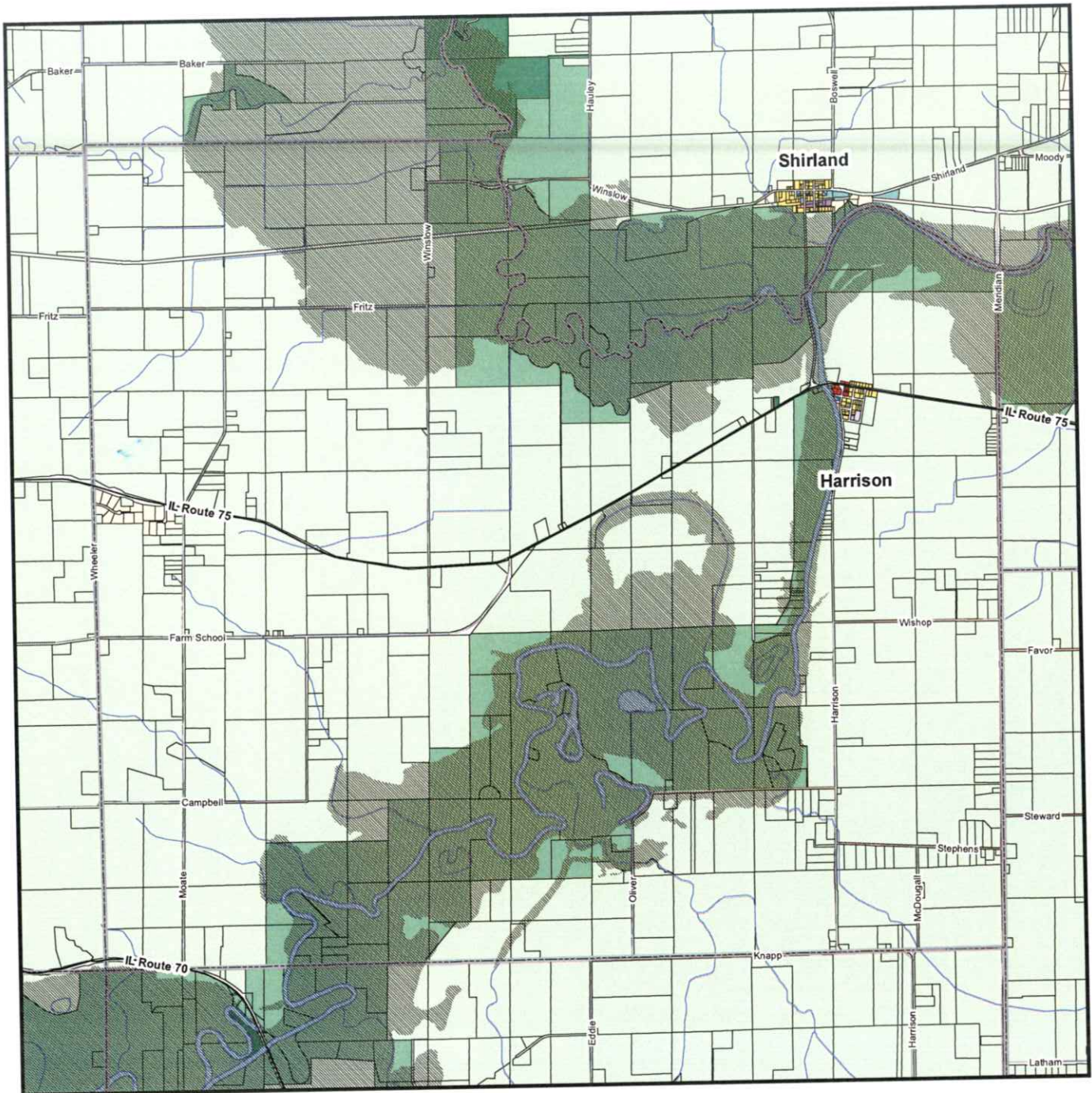
Winnebago County	Agriculture	Commercial	Existing - Open Space or Forest Preserve
Townships	Low Density Residential	Commercial or Office	Future - Open Space or Forest Preserve
Incorporated Boundary	Medium Density Residential	Light Industrial	River Corridor Protection Overlay
Lakes & Waterways	High Density Residential	Medium Industrial	Public Facility
Airport Property	Encouraged Traditional Neighborhood Development	Heavy Industrial	
		Heavy Commercial or Light Industrial	

\*Data Source Courtesy of WinGIS



**Figure 3e: Future Land Use - Shirland**

2030 Land Resource Management Plan  
Winnebago County, Illinois



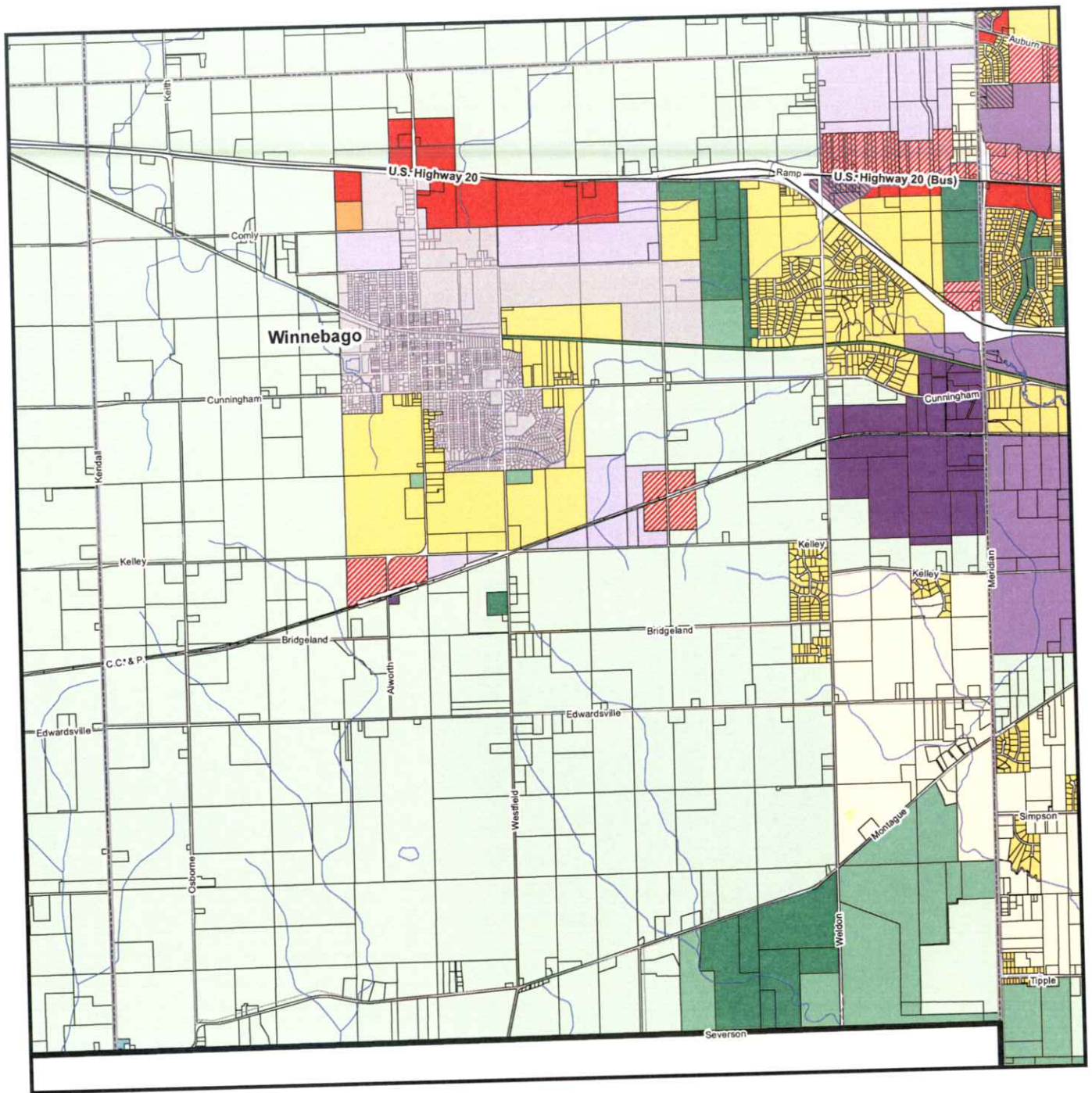
\*Data Source Courtesy of WinGIS



**Figure 3f: Future Land Use - Harrison**

2030 Land Resource Management Plan  
Winnebago County, Illinois





**Legend**

Winnebago County	Agriculture	Commercial	Existing - Open Space or Forest Preserve
Townships	Low Density Residential	Commercial or Office	Future - Open Space or Forest Preserve
Incorporated Boundary	Medium Density Residential	Light Industrial	River Corridor Protection Overlay
Lakes & Waterways	High Density Residential	Medium Industrial	Public Facility
Airport Property	Encouraged Traditional Neighborhood Development	Heavy Industrial	
		Heavy Commercial or Light Industrial	

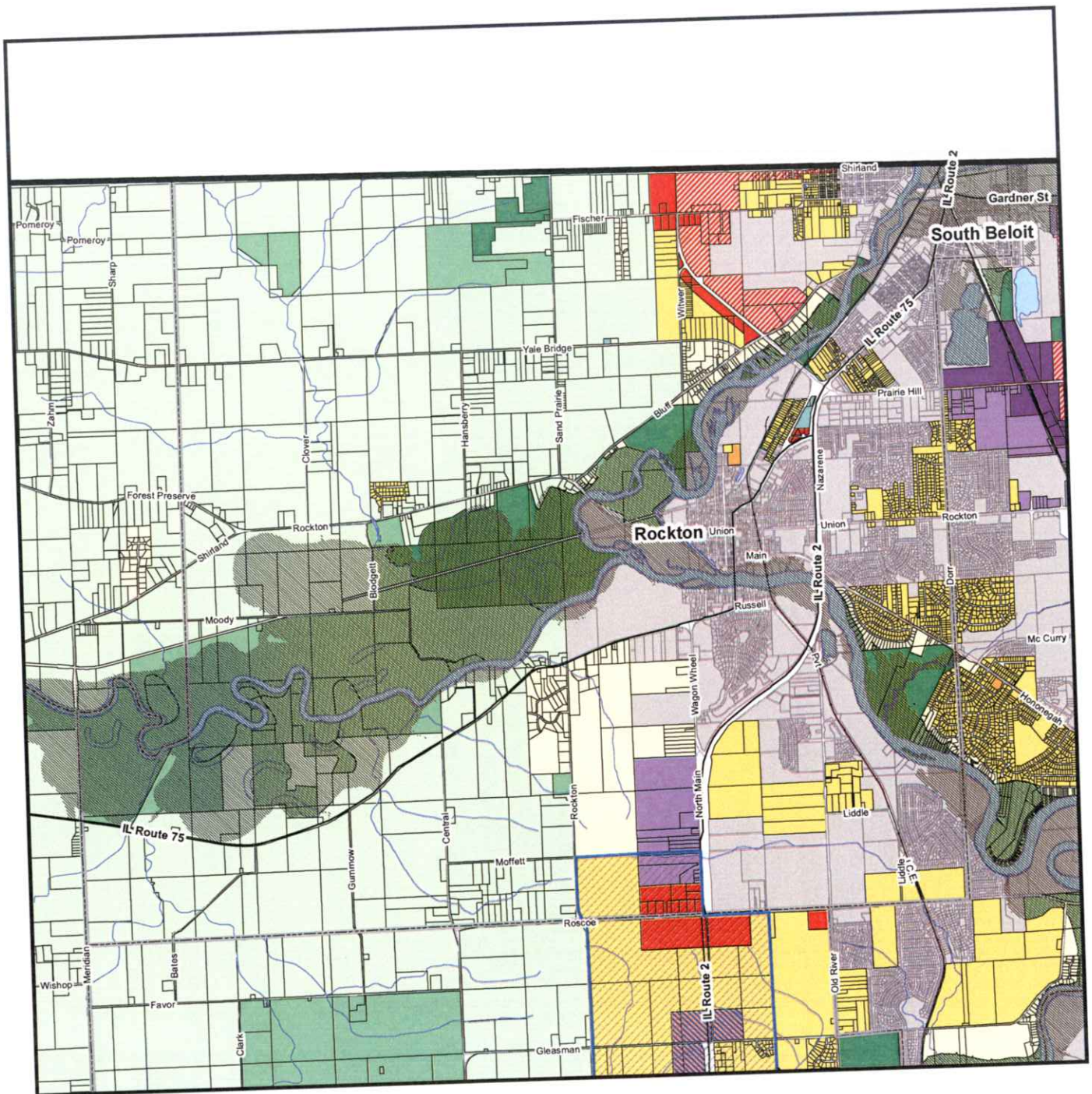
\*Data Source Courtesy of WinGIS

# Figure 3h: Future Land Use - Winnebago

2030 Land Resource Management Plan  
Winnebago County, Illinois



CAMIROS



**Legend**

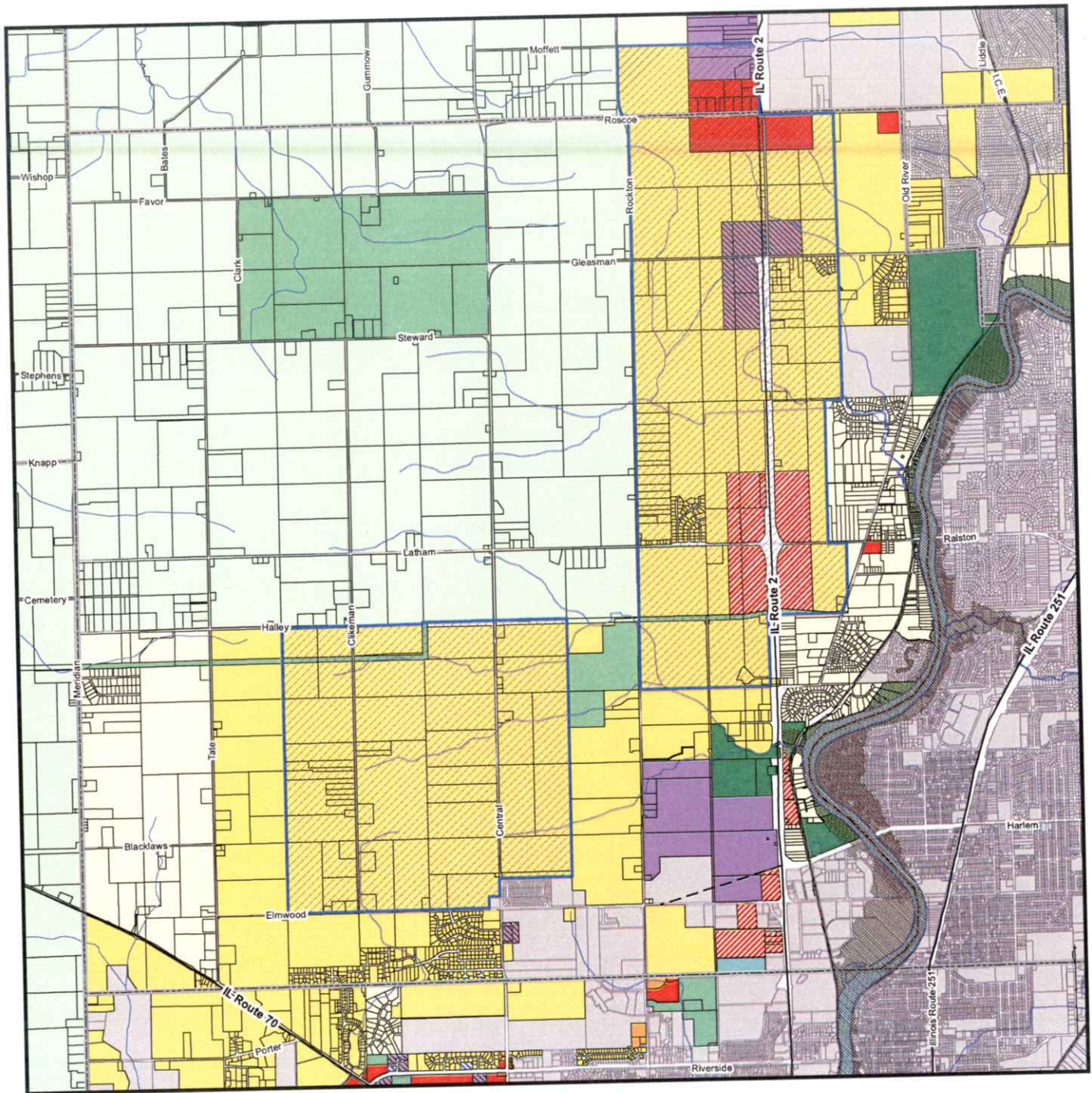
Winnebago County	Agriculture	Commercial	Existing - Open Space or Forest Preserve
Townships	Low Density Residential	Commercial or Office	Future - Open Space or Forest Preserve
Incorporated Boundary	Medium Density Residential	Light Industrial	River Corridor Protection Overlay
Lakes & Waterways	High Density Residential	Medium Industrial	Public Facility
Airport Property	Encouraged Traditional Neighborhood Development	Heavy Industrial	
	Heavy Commercial or Light Industrial		

\*Data Source Courtesy of WinGIS



**Figure 3i: Future Land Use - Rockton**

2030 Land Resource Management Plan  
Winnebago County, Illinois



**Legend**

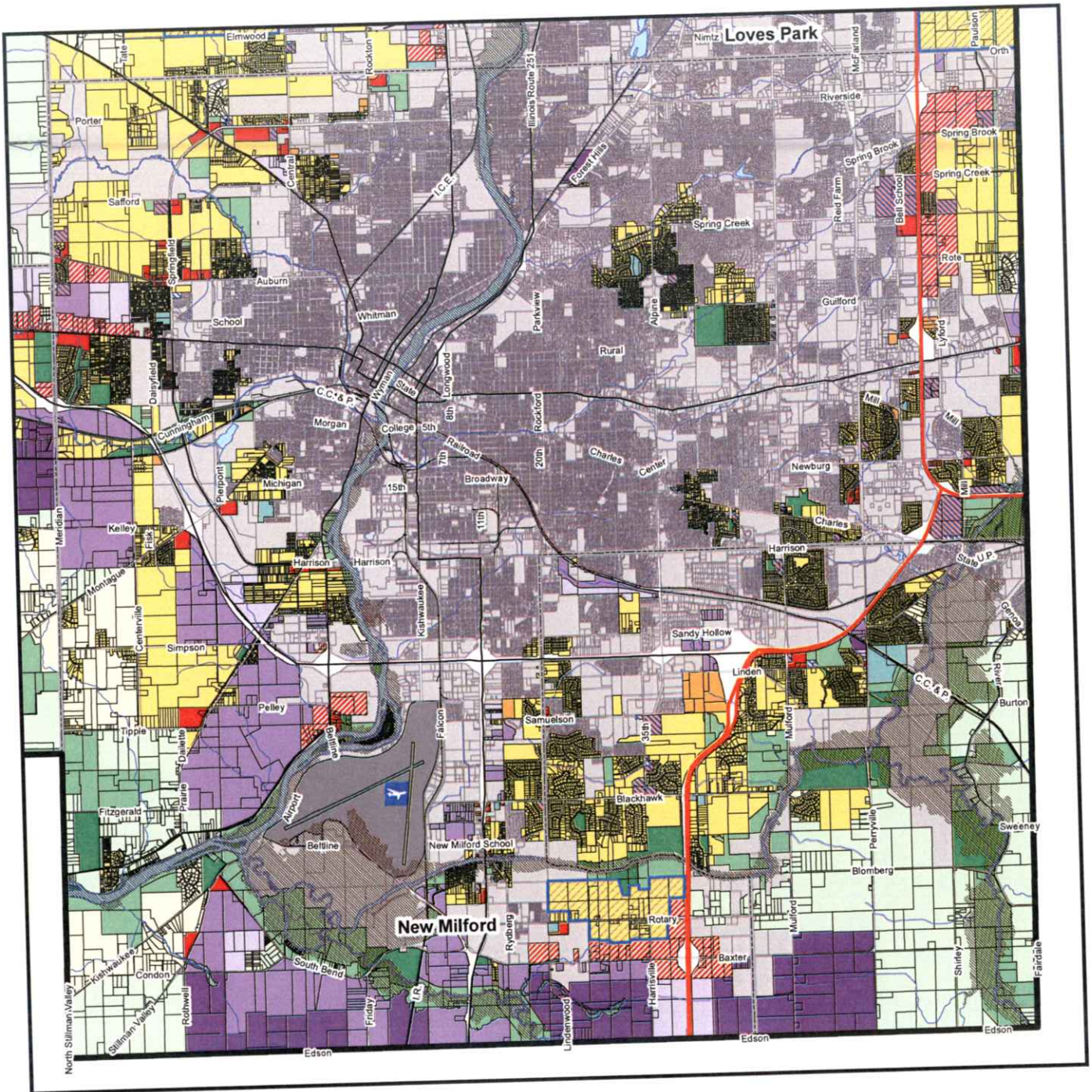
Winnebago County	Agriculture	Commercial	Existing - Open Space or Forest Preserve
Townships	Low Density Residential	Commercial or Office	Future - Open Space or Forest Preserve
Incorporated Boundary	Medium Density Residential	Light Industrial	River Corridor Protection Overlay
Lakes & Waterways	High Density Residential	Medium Industrial	Public Facility
Airport Property	Encouraged Traditional Neighborhood Development	Heavy Industrial	
		Heavy Commercial or Light Industrial	

\*Data Source Courtesy of WinGIS



# Figure 3j: Future Land Use - Owen

2030 Land Resource Management Plan  
Winnebago County, Illinois



**Legend**

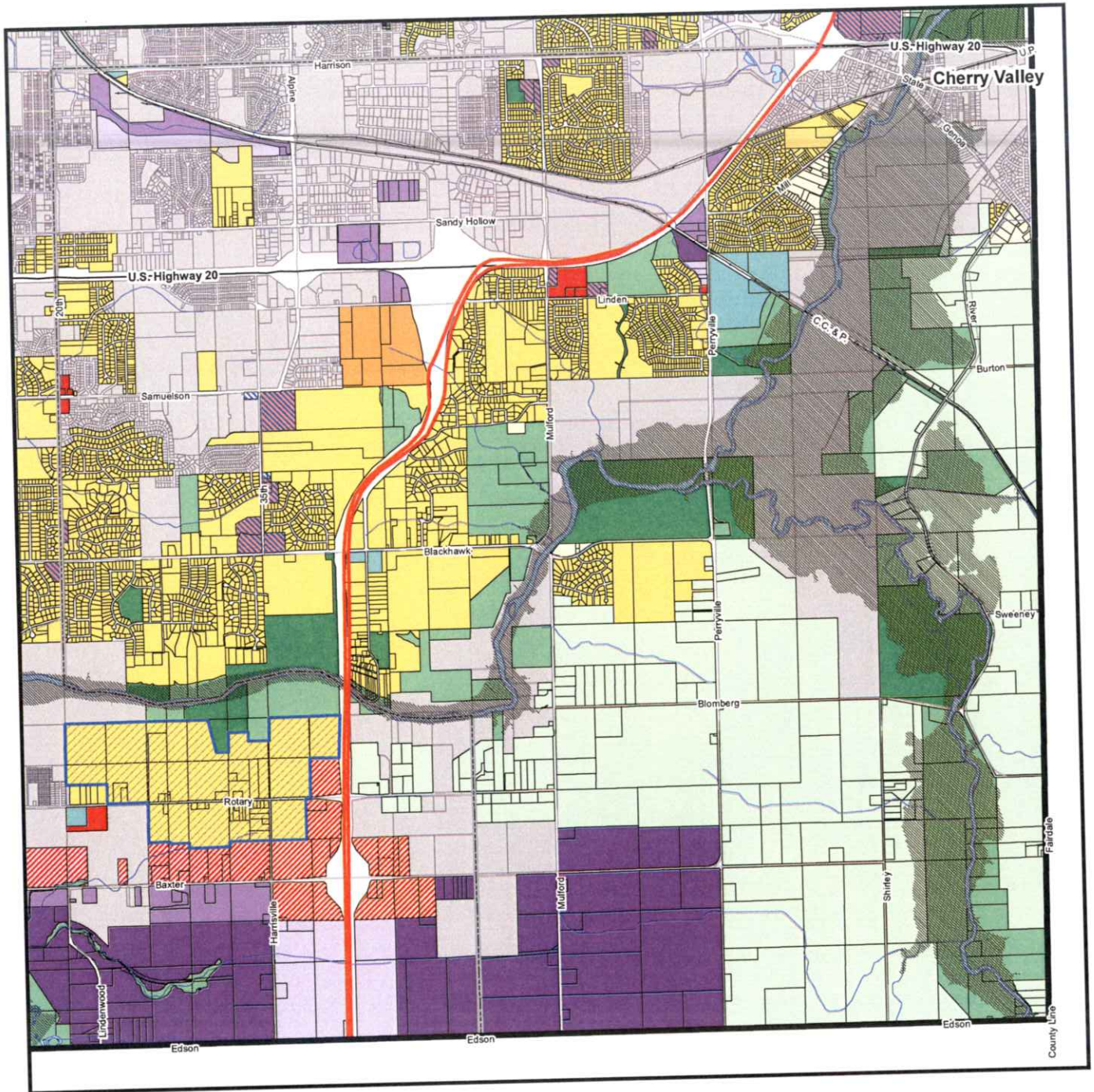
- |                       |   |                                      |  |
|-----------------------|---|--------------------------------------|--|
| Winnebago County      | Agriculture                                     | Commercial                           | Existing - Open Space or Forest Preserve |
| Townships             | Low Density Residential                         | Commercial or Office                 | Future - Open Space or Forest Preserve   |
| Incorporated Boundary | Medium Density Residential                      | Light Industrial                     | River Corridor Protection Overlay        |
| Lakes & Waterways     | High Density Residential                        | Medium Industrial                    | Public Facility                          |
| Airport Property      | Encouraged Traditional Neighborhood Development | Heavy Industrial                     |  |
|                       |   | Heavy Commercial or Light Industrial |  |

\*Data Source Courtesy of WinGIS



**Figure 3k: Future Land Use - Rockford**

2030 Land Resource Management Plan  
Winnebago County, Illinois



**Legend**

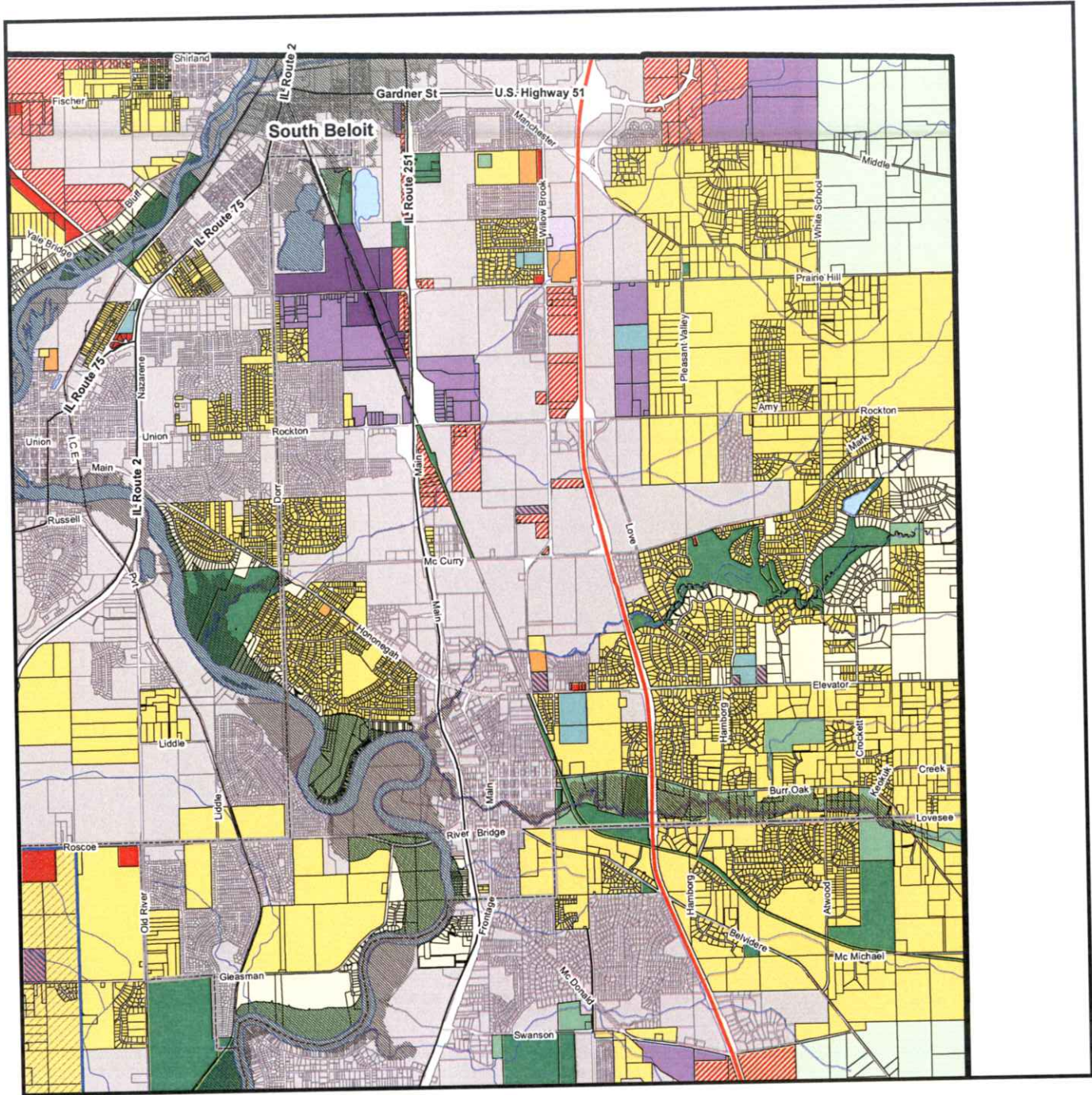
- |                       |   |                      |  |
|-----------------------|---|----------------------|--|
| Winnebago County      | Agriculture                                     | Commercial           | Existing - Open Space or Forest Preserve |
| Townships             | Low Density Residential                         | Commercial or Office | Future - Open Space or Forest Preserve   |
| Incorporated Boundary | Medium Density Residential                      | Light Industrial     | River Corridor Protection Overlay        |
| Lakes & Waterways     | High Density Residential                        | Medium Industrial    | Public Facility                          |
| Airport Property      | Encouraged Traditional Neighborhood Development | Heavy Industrial     |  |
|                       | Heavy Commercial or Light Industrial            |                      |  |

\*Data Source Courtesy of WinGIS



**Figure 31: Future Land Use - Cherry Valley**

2030 Land Resource Management Plan  
Winnebago County, Illinois



**Legend**

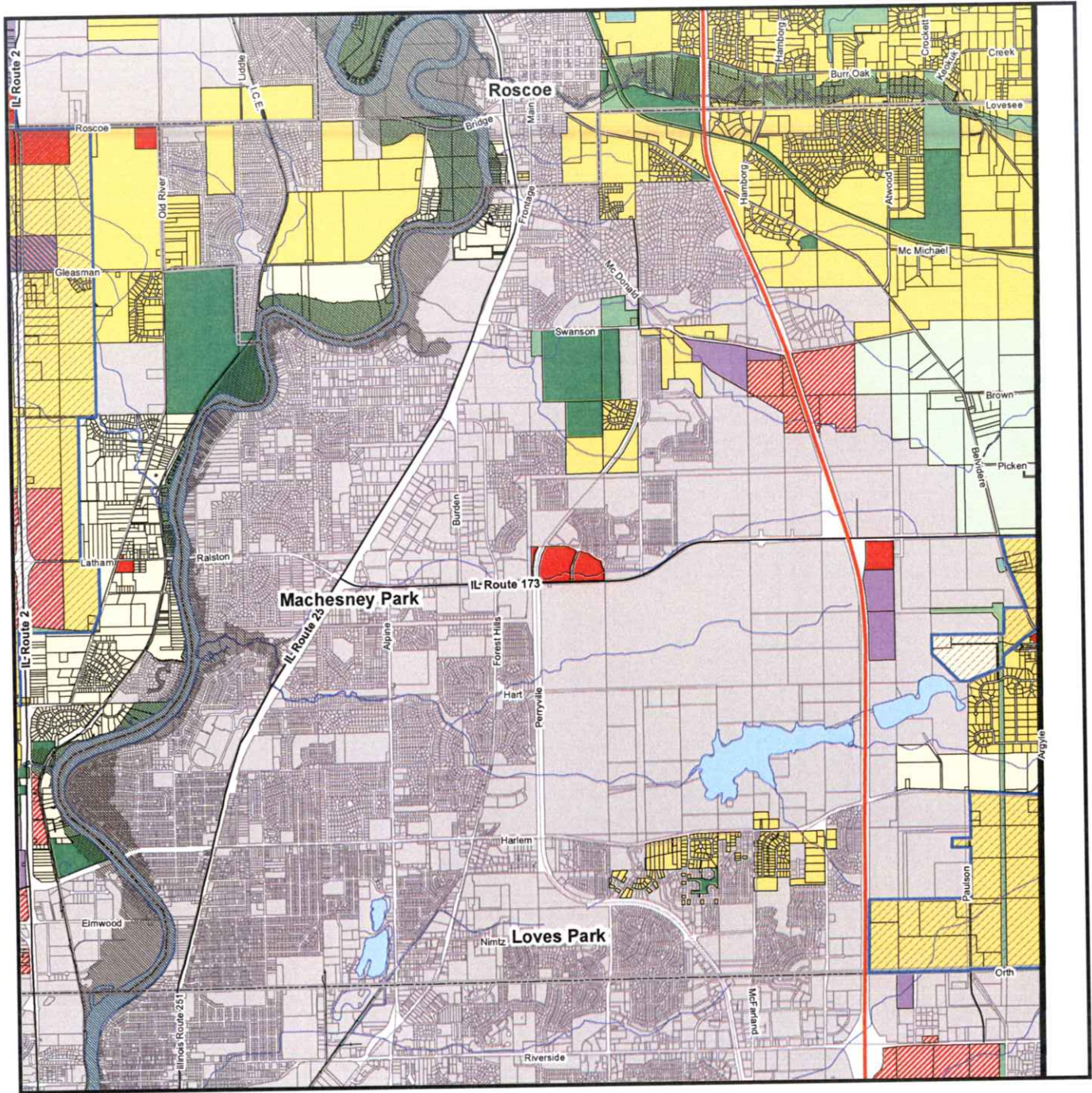
- |  |  |   |  |
|--|--|---|--|
| <ul style="list-style-type: none"> <li> Winnebago County</li> <li> Townships</li> <li> Incorporated Boundary</li> <li> Lakes &amp; Waterways</li> <li> Airport Property</li> </ul> | <ul style="list-style-type: none"> <li> Agriculture</li> <li> Low Density Residential</li> <li> Medium Density Residential</li> <li> High Density Residential</li> <li> Encouraged Traditional Neighborhood Development</li> </ul> | <ul style="list-style-type: none"> <li> Commercial</li> <li> Commercial or Office</li> <li> Light Industrial</li> <li> Medium Industrial</li> <li> Heavy Industrial</li> <li> Heavy Commercial or Light Industrial</li> </ul> | <ul style="list-style-type: none"> <li> Existing - Open Space or Forest Preserve</li> <li> Future - Open Space or Forest Preserve</li> <li> River Corridor Protection Overlay</li> <li> Public Facility</li> </ul> |
|--|--|---|--|

\*Data Source Courtesy of WinGIS

**Figure 3m: Future Land Use - Roscoe**

2030 Land Resource Management Plan  
Winnebago County, Illinois





**Legend**

Winnebago County	Agriculture	Commercial	Existing - Open Space or Forest Preserve
Townships	Low Density Residential	Commercial or Office	Future - Open Space or Forest Preserve
Incorporated Boundary	Medium Density Residential	Light Industrial	River Corridor Protection Overlay
Lakes & Waterways	High Density Residential	Medium Industrial	Public Facility
Airport Property	Encouraged Traditional Neighborhood Development	Heavy Industrial	
	Heavy Commercial or Light Industrial		

\*Data Source Courtesy of WinGIS

**Figure 3n: Future Land Use - Harlem**

2030 Land Resource Management Plan  
Winnebago County, Illinois

